

**Hemp Flower**  
Reggie & Dro LLC  
Casper, WY

**Devil's Mistress**

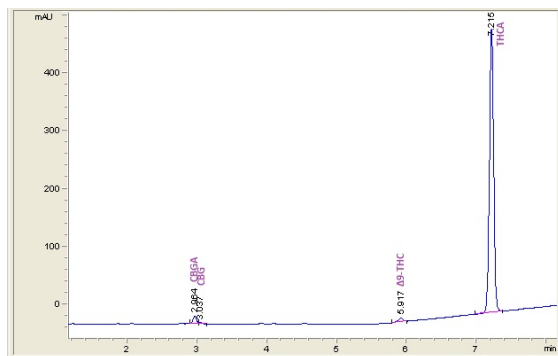
Sample Submitted: 1-20-2024; Report Date: 1-22-2024

## Devil's Mistress

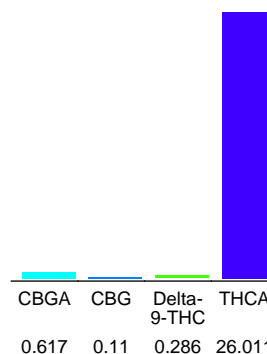
Plant Material: Hemp Flower

Batch/Lot # DC20DM0824

### Chromatogram



### Cannabinoid Profile



### Cannabinoid Profile by HPLC

**0.29%**

Delta-9-THC

**0.00%**

CBD

**27.02%**

Total Cannabinoids

Cannabinoid	% wt	mg/g
CBGA	0.617	6.17
CBG	0.11	1.1
Delta-9-THC	0.286	2.86
THCA	26.01	260.11
<b>Total Cannabinoids</b>	<b>27.02</b>	<b>270.2</b>

**Marin Analytics, LLC**

250 Bel Marin Keys Blvd, Suite D4  
Novato, CA 94949

833-321-TEST / info@marinanalytics.com

**Mike Clemmons**  
Lab Manager

This sample has been tested by Marin Analytics, LLC using valid testing methodologies and a quality system. Values reported relate only to the sample tested. Marin Analytics, LLC makes no claims as to the efficacy, safety, or other risks associated with any detected or non-detected levels of any compounds reported herein. This Certificate shall not be reproduced except in full without the written approval of Marin Analytics, LLC. Copyright 2023 Marin Analytics, LLC All Rights Reserved.