



**Hemp Flower**  
Reggie & Dro LLC  
Casper, WY

**Sample 785-342877-366**

**Pineapple Express**

Batch/Lot # PE422.1

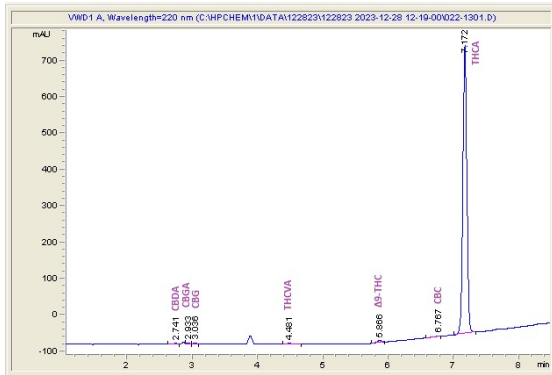
Sample Submitted: 08-16-2024; Report Date: 08-20-2024

### Pineapple Express

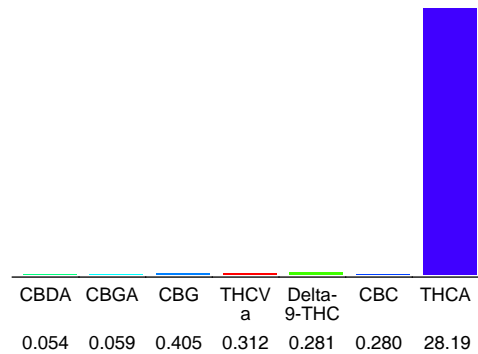
**Batch/Lot # PE422.1**

Plant Material: Hemp Flower

#### Chromatogram



#### Cannabinoid Profile



#### Cannabinoid Profile by HPLC

**0.27%**  
Delta-9-THC

**0.00%**  
CBD

**29.86%**  
Total Cannabinoids

Cannabinoid	% wt	mg/g
CBDA	0.056	0.56
CBGA	0.061	0.61
CBG	0.400	4.00
THCVa	0.312	3.12
Delta-9-THC	0.274	2.74
CBC	0.280	2.80
THCA	28.48	284.77

**Total Cannabinoids 29.86 298.6**

**Calculated Total THC 20.71 207.13**

**Calculated CBD Yield 0.04 0.42**

Calculated Total THC = Delta-9-THC + 0.877 \* THCA

Calculated Maximum CBD Yield = CBD + 0.877 \* CBDA

**Marin Analytics, LLC**

250 Bel Marin Keys Blvd, Suite D4  
Novato, CA 94949

833-321-TEST / info@marinanalytics.com

**Mike Clemmons**  
Lab Manager